

Tackling child labor

Child labor is a global problem.

Unfortunately, in many countries, children still do some work that affects their development and too often prevents them from attending school.



According to the International Labor Organization (ILO), about **152 million** children are involved in child labor



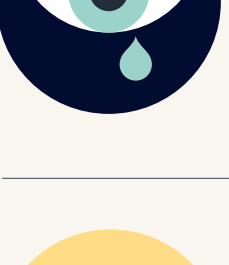
That's about **1 in 10** of the world's children



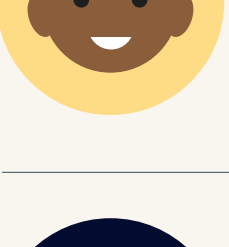
73 million of these children are between **5 and 11** years old

What is child labor?

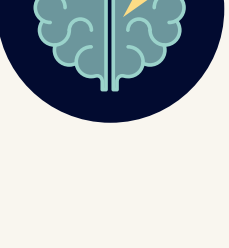
The ILO defines child labor as:



Work that deprives children of their potential and their dignity



Work that deprives children of their childhood or interferes with their schooling



Work that is harmful to physical and mental development



Child labor is unacceptable.

We are committed to ensuring all of our products are made in the most sustainable way and are expanding our efforts to help and protect more children and more communities.

“Child labor is unacceptable. That is why we are working so hard to tackle it. We are unwavering in our commitment to addressing the root causes and helping as many children as possible.”

Magdi Batato, EVP, Head of Operations at Nestlé

Working with our partners, farmers, and suppliers on the ground, we are able to:



Identify children at risk



Engage directly with households and communities



Provide individualized remediation measures

The International Cocoa Initiative is our main partner in helping to improve lives in cocoa farming communities and address child labor risk.

To address the root causes of child labor, we also work with the Jacobs Foundation, the governments of cocoa-producing and cocoa-consuming countries, the Fair Labor Association, UTZ/Rainforest Alliance, and the World Cocoa Foundation, among other expert organizations and industry working groups.



We work directly with farmers and suppliers on the ground to take action on child labor issues.



Farmers

Trained to improve their productivity and income and to avoid child labor

Sell the cocoa they produce to a farming cooperative (co-op)

In Côte d'Ivoire we buy cocoa from about 83 co-ops (about 80,000 farmers)

Community Liaison People

Chosen by their local community

Responsible for educating communities about the dangers children face on farms. These sessions are open to everyone, not only farmers supplying Nestlé

Co-op Child Labor Agents

Help to devise and organize the specific intervention efforts needed to help each child at risk

Coordinate the Community Liaison People in their co-op

Suppliers

Help to recruit child labor agents

Support data gathering process

Nestlé

Through our cocoa sustainability program we tackle the root causes of child labor and provide support for a community-based system that can detect and help children at risk

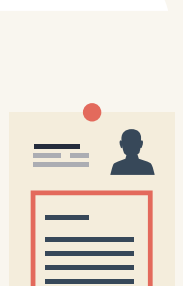
Pays a premium for quality cocoa on top of the Living Income Differential to ensure farmers and their families live decent lives

Helps farmers improve their productivity and quality to increase their income by providing higher-yielding plantlets and training them on best agricultural practices

Why is this approach different?

In the cocoa sector, most child labor takes place on family farms. To address this, it's important to have information about the conditions in farming communities and the context in which child labor occurs. This gives us a better chance to help individuals directly and respond to their specific needs.

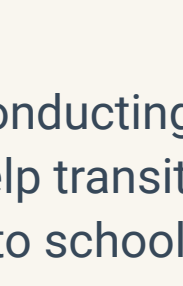
Sometimes intervention efforts are simple.



Securing a child's birth certificate so they can attend school



Providing children with school equipment and uniforms



Conducting bridge classes to help transition children back into schools

Sometimes they are complex.

Making sure farming communities have schools nearby, by building or renovating them

Enabling mothers of children at risk to generate their own income to cover school costs for their children

Organizing adult worker groups to carry out tasks like pruning on farms

Training farmers on best agricultural practices and promoting income diversification to improve farmer income and livelihood

SCHOOL



What progress have we made?

Out of the 83 co-ops in Côte D'Ivoire that supply us with cocoa:



Nearly **600,000** community members educated on child labor issues



Keep contact with the families of over **86,000** children to assess the risk of child labor

1,751 communities involved in the system

Helped **5,756** children secure birth certificates so they can complete primary school



1,640 community liaison people recruited and trained



Almost **128,000** children haven't been protected against the risk of child labor since 2012



83 co-ops involved in the system, covering about 80,000 farmers



More than **50** schools built or refurbished

Currently, all cocoa used in U.S. products is UTZ certified. By 2025, we aim to source all of our cocoa globally through the Nestlé Cocoa Plan, which means it will be traceable and certified by a third party.

For more information:

www.cocoainitiative.org/about-ici/about-us/
www.fairlabor.org/affiliate/nestle
www.ilo.org/global/publications/books/WCMS_575499/lang-ja/index.htm
www.nestlecocoa.com
www.nestle.com/ask-nestle/human-rights/answers/nestle-child-labour-supply-chains